

Upholstered Furniture

Background on Construction, Flammability and FR Regulations



April 2007



Cushioning Materials

Are a Potential
Fuel Load



April 2007

Ignition Sources

**Cigarettes
(Smoldering
Ignition)**

**Matches and
Lighters (Small
Open Flames)**



April 2007

Behavioral Aspects

Arson

Youth Fireplay

No Working Smoke
Detectors



April 2007



Cigarette Risks

Executive Summary Figure 2: Per Capita Risk of Death
in a Cigarette-Ignited Furniture Fire, 1980-2002

(CPSC Extrapolation Methodology and CRA Extrapolation Methodology)

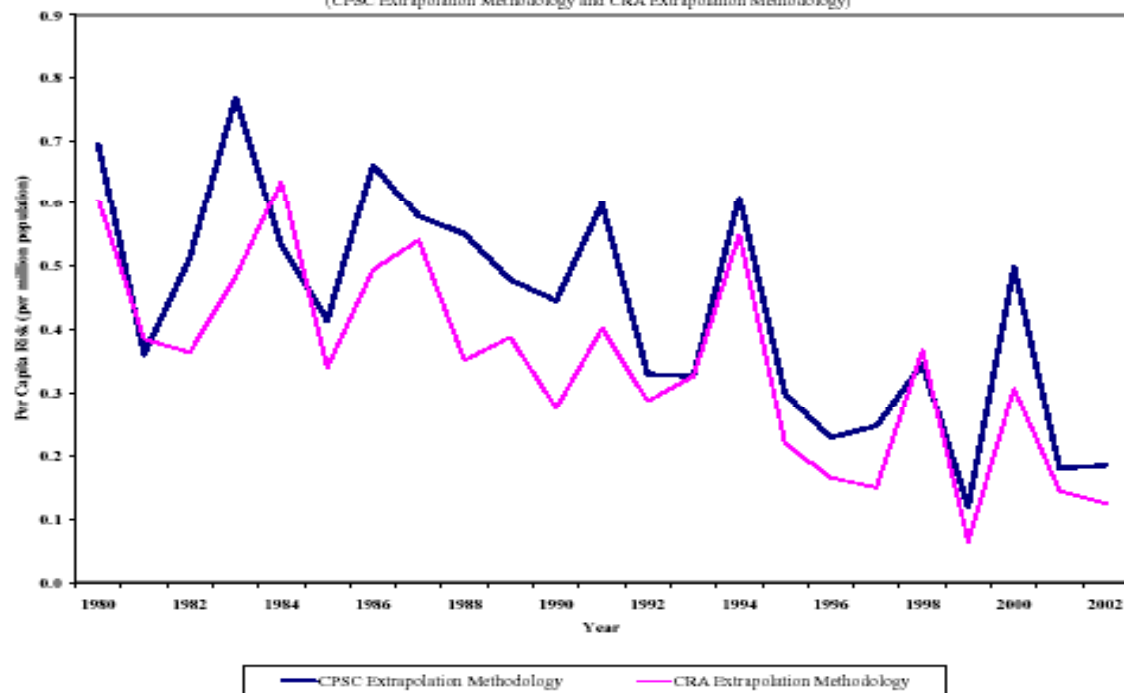


April 2007



Small Open Flame Risks

Executive Summary Figure 3: Per Capita Risk of Death in a Small Open Flame-Ignited Furniture Fire, 1980-2002
(CPSC Extrapolation Methodology and CRA Extrapolation Methodology)



April 2007



The Key Factor

U.S. Smoking Prevalence

1980 33.2 %

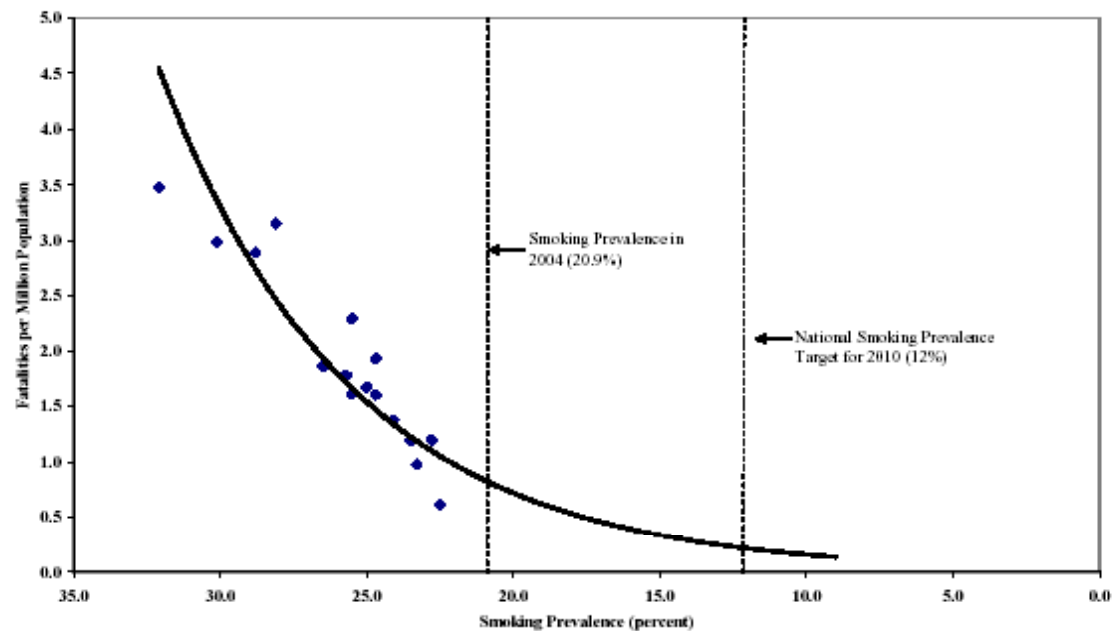
2003 21.6 %



April 2007

Less Smoking Means Fewer Furniture Fires

Figure 3: Projected Fatality Rate from Cigarette-Ignited Furniture Fires Given a Continued Decline in Smoking Prevalence



April 2007



Fire-Safe Cigarettes

**Should Reduce
Mattress and
Bedding Fires**

**Rapid Turnover
of Inventory
Means Faster
Impact**



April 2007

FR Regulations

Lab Tests Show FR Foams Not Effective

CPSC: *“No significant effect of different filling materials ... FR foams taken from California and U.K. chairs did not improve ignition resistance or cause mock-ups to self-extinguish .”*



April 2007



Questions?

Russell Batson
**American Home
Furnishings Alliance**

(977) 278-2118, ext. 113

batsonr@ahfa.us



April 2007

